

**eco crystal**

**WATER TREATMENT**

An ISO 9001:2015 Certified Company



# LET'S MAKE THINGS FOR FUTURE...!!

## Commercial Water Purifier

### For Hard water And Soft Water

## “KEY FACTORS TO BUY ECO CRYSTAL WATER FILTERS”



**HOSPITALS**



**SCHOOLS**

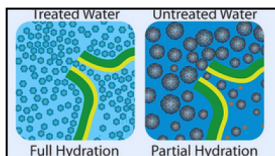


**RESTURANTS**



**INDUSTRIES**

### MAGNETIZED DRINKING WATER



- 1. Better Hydration for the body.
- 2. Better Washing of Utensils.
- 3. Energy Saving In Cooking .
- 4. Water Boils Faster.

Better Taste of  
Coffee



Tested By Coffee lab

## FOR INDUSTRIES, FACTORIES, RESTAURANTS AND SMALL BUSINESS ESTABLISHMENTS ETC..

**1. Aqua Archimedes - C 250 LPH** 




**FEATURES :**

- Water delivered from UV system for Bacteria Free water.
- Multi UV of Eco Crystal to balance the flow capacity.
- Magnetizer for better taste of tea / coffee
- Provision pump for low pressure.
- Faucet on the structure.
- Tubular structure.
- 3 no's 20 " housing.
- Capacity : 250 LPH.
- Without tank.

**SPECIFICATION :**

**Product Dimensions :**  
**L x W x H : 537 X 287 X 911 mm**  
**Material : Stainless Steel Structure**

**2. Aqua Archimedes - C /T 250 LPH** 



**FEATURES :**

- Multi UV of Eco Crystal to balance the flow capacity.
- Magnetizer for better taste of tea / coffee.
- UV After Tank for Bacteria Free water.
- Provision pump for low pressure.
- 50 Liters Stainless Steel Tank.
- Faucet on the structure.
- Tubular structure.
- 3 no's 20 " housing.

**SPECIFICATION :**

**Product Dimensions :**  
**L x W x H : 537 X 287 X 1300 mm**  
**Material : Stainless Steel Structure**



### 3. Water Live Station UF + UV

FOR SOFT WATER

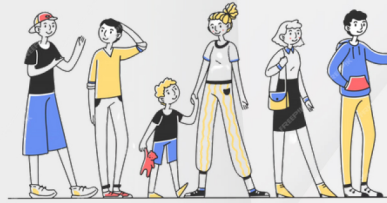
WATER LIVE STATION

“ Restaurant water For Future”  
-Live Drinking Water station

NEW  
CONCEPT

JUST LIKE LIVE DOSA COUNTER

THERE IS WATER LIVE STATION



#### ADVANTAGE:

No Need of Inlet Water connection  
Raw Water tank to be filled with  
50Liters Manually.  
Customer can go to the Live station  
with cup to fill up pure drinking  
water from live station

Model is developed as per  
international standarads



#### FEATURES :

- Magnetizer before pre filter (Patented) technology for better hydration for the body.
- No Need of online inlet water connection.
- Bacteria free Pure water for drinking.
- UV System with High Flow Water.
- UF & UV for bacteria free water.
- High flow rate (01 Liter -22 sec).
- 10 liters inbuilt pressure tank.
- 50 Liters Raw water Tank
- 5 stage Filtration.
- Instant Pure water.
- UV after tank

#### SPECIFICATION :

Product Dimensions :

L x W x H : 500 x 330x 1110mm

Material : Stainless Steel Structure

#### Benefits of Magnetizer :

##### 1. Health Benefits

Magnetically treated water is well absorbed in the body and hydrates better.

##### 2. Water Boils Faster

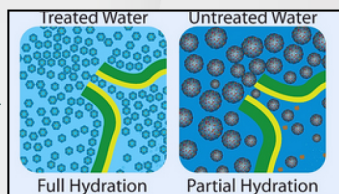
Water boils faster in the case of magnetic water due to changes in the physical properties of water.

##### 3. Better Washing of Utensils .

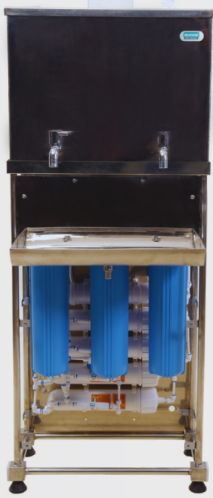
##### 4. Energy Saving In Cooking .

##### 5. Scale free UV tube .

No Blockage of UV rays



1. TS - RO - T UV 50 LPH (with tank)



FEATURES :

- Crystal processor magnetizer. (Patented)
- UV After Tank for Bacteria Free water.
- 3 stage 20" cartridges ( PP- CTO -PP).
- Automatic controlled float switch.
- Stainless steel Tubular structure.
- Revers Osmosis water purifier.
- 50 liters stainless steel tank.
- Faucet On the Structure.

SPECIFICATION :

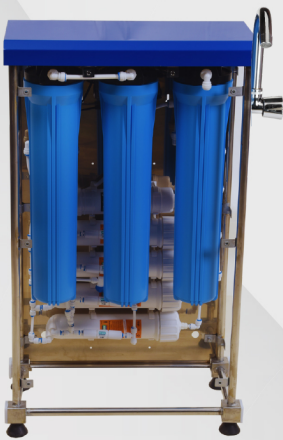
Product Dimensions :

L x W x H : 537 X 287 X 1300 mm

Material : Stainless Steel Structure

Capacity : 50 LPH

2. TS - RO - 50 LPH (without tank)



FEATURES :

- Crystal processor magnetizer. (Patented)
- 3 stage 20" cartridges ( PP- CTO -PP).
- Automatic controlled float switch.
- Stainless steel Tubular structure.
- Revers Osmosis water purifier.
- Faucet On the Structure.
- Bacteria Free RO water.

SPECIFICATION :

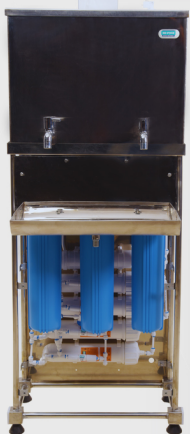
Product Dimensions :

L x W x H : 537 X 287 X 911 mm

Material : Stainless Steel Structure

Capacity : 50 LPH

3. TS - RO - T UV 100 LPH (with tank)



FEATURES :

- Crystal processor magnetizer.(Patented)
- UV After Tank for Bacteria Free water.
- 3 stage 20" cartridges ( PP- CTO -PP).
- Automatic controlled float switch.
- Stainless steel Tubular structure.
- Revers Osmosis water purifier.
- 50 liters stainless steel tank.
- Faucet On the Structure.

SPECIFICATION :

Product Dimensions :

L x W x H : 537 X 287 X 1300 mm

Material : Stainless Steel Structure

Capacity : 100 LPH

**4.TS - RO - 100 LPH (without tank )**



**FEATURES :**

- Crystal processor magnetizer . (Patented)
- 3 stage 20" cartridges ( PP- CTO -PP).
- Automatic controlled float switch.
- Stainless steel Tubular structure.
- Revers Osmosis water purifier.
- Faucet On the Structure.
- Bacteria Free RO water.

**SPECIFICATION :**

**Product Dimensions :**

L x W x H : 537 X 287 X 911 mm

Material : Stainless Steel Structure

Capacity : 100 LPH

**5.Commercial RO 250 LPH**



**FEATURES :**

- Control for monitoring Solenoid valve, low pressure switch and high pressure switch .
- 20" Jumbo PP cartridges (PP - CTO- PP ) to bring turbidity to below 0.1 NTU.
- Set 3/4 " gate valve based on TDS as per chart displayed on the product.
- 1/2 HP feed water pump to supply minimum water pressure 2 bar.
- Single phase centrifugal pump 1.5 HP RO pump , 50 Hz, 9A.
- One high capacity 40 x 40 RO membrane in steel housing.
- Parameter indicators flow meter and pressure gauge.
- M.S structure with sand blasting and epoxy coating.
- 1" 230V solenoid valve with F - class insulation.
- Low pressure switch for pump protection
- 1" Hydro ion ( Magnetizer)

**SPECIFICATION :**

product Dimensions : L x W x H : 900 X 730 X 1240 mm

Material : Mild steel structure with powder coating

**6.Commercial RO 500 LPH**



**FEATURES :**

- Control for monitoring Solenoid valve, low pressure switch and high pressure switch.
- 20" Jumbo PP cartridges (PP - CTO- PP ) to bring turbidity to below 0.1 NTU.
- Set 3/4 " gate valve based on TDS as per chart displayed on the product.
- 1/2 HP feed water pump to supply minimum water pressure 2 bar.
- Single phase centrifugal pump 2 HP RO pump, 50 Hz, 12A.
- Two high capacity 40 x 40 RO membrane in steel housing.
- Parameter indicators flow meter and pressure gauge.
- Steel structure with sand blasting and epoxy coating.
- 1" 230V solenoid valve with F - class insulation.
- Low pressure switch for pump protection.
- 1" Hydro ion ( Magnetizer).

**SPECIFICATION :**

product Dimensions : L x W x H : 900 X 730 X 1240 mm

Material : Mild steel structure with powder coating

## Commercial Water Purifiers FOR HARD WATER

### 7. Commercial RO 1000 LPH



#### FEATURES :

- Control for monitoring Solenoid valve, low pressure switch and high pressure switch.
- 20" Jumbo PP cartridges (PP - CTO- PP ) to bring turbidity to below 0.1 NTU.
- Set 3/4 "gate valve based on TDS as per chart displayed on the product.
- 1 HP feed water pump to supply minimum water pressure 2 bar.
- Single phase centrifugal pump 3 HP RO pump , 50 Hz,15.7A.
- Four high capacity 40 x 40 RO membrane in steel housing.
- Steel structure with sand blasting and epoxy coating.
- Parameter indicators flow meter and pressure gauge.
- 1" 230V solenoid valve with F - class insulation
- Low pressure switch for pump protection.
- 1" Hydro ion ( Magnetizer ) .

#### SPECIFICATION :

Product Dimensions : L x W x H : 1300 X 730 X 1240 mm

Material : Mild steel structure with powder coating

\*\*\*We supply different capacity of models with SS Storage Tank based on the requirement \*\*\*

### 8. Water Live Station RO + UV

WATER LIVE STATION

“ Restaurant water For Future”  
-Live Drinking Water station

NEW  
CONCEPT

#### ADVANTAGE:

No Need of Inlet Water connection  
Raw Water tank to be filled with  
50Liters Manually.  
Customer can go to the Live station  
with cup to fill up pure drinking  
water from live station

Model is developed as per  
international standards

JUST LIKE LIVE DOSA COUNTER

THERE IS WATER LIVE STATION



#### FEATURES :

- Magnetizer before pre filter (Patented). technology for better hydration for the body.
- No Need of online inlet water connection.
- RO + UV System with High Flow Water.
- Bacteria free Pure water for drinking.
- High flow rate (01 Liter -22 sec).
- 10 liters inbuilt pressure tank.
- 50 Liters Raw water Tank
- 5 stage Filtration.
- Instant Pure water.
- UV after tank

#### SPECIFICATION :

Product Dimensions :

L x W x H : 500 x 330x 1110mm

Material : Stainless Steel Structure



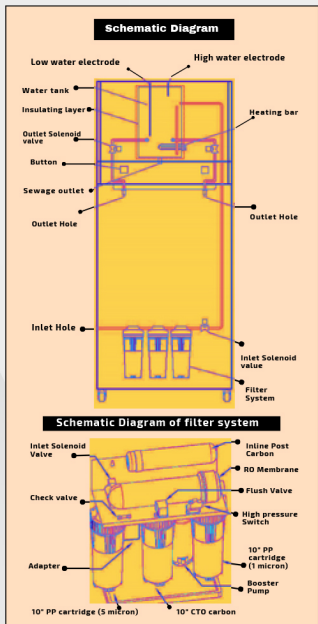
## Hot 'n' Normal Water Dispenser .

1. Dispenser RO+UV with hot water (Hard water).
2. Dispenser UF+UV with hot water (Soft water).



## Commercial Water Purifiers Hot & Normal Water Dispenser YS-30BK

### 1. Dispenser RO+UV with hot water (Hard water).



#### FEATURES :

- 10 liter pressure tank for RO water (for a better flow rate)
- Outer body chrome plated glossy finish SS cabinet.
- 15 Liters Hot water stainless steel storage tank.
- Crystal processor 10ND (magnetizer patented).
- Ready room temperature for drinking.
- Ready hot water for tea/coffee.
- Touch screen digital display.
- Boiling water up to 100 °C.
- Bacteria Free Water.
- 10" Pre-filter set.
- Fully automatic.
- RO + UV

#### SPECIFICATION :

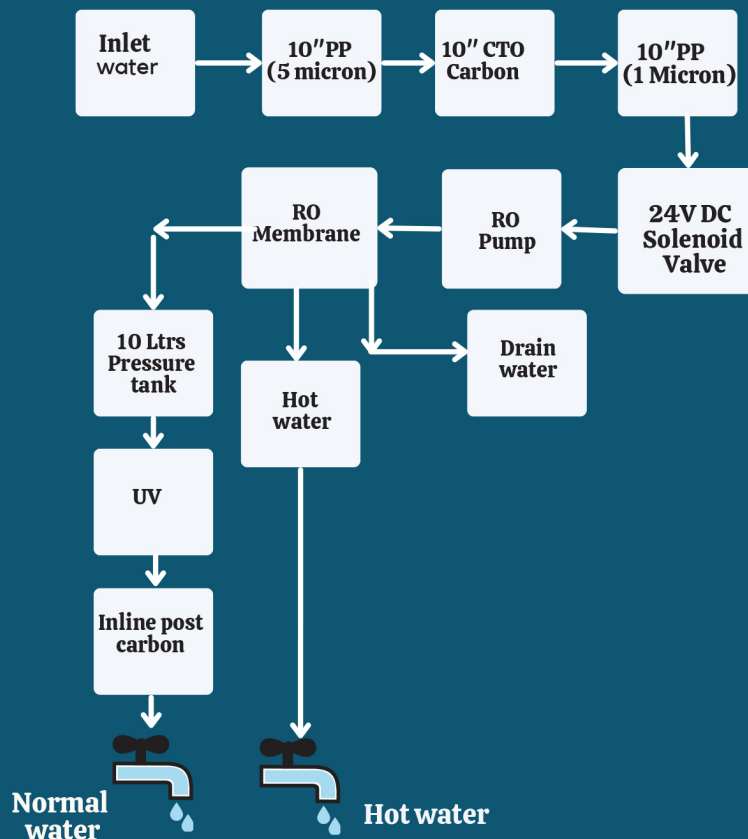
##### Product Dimensions :

L x W x H : 400 x 465 x 1500 mm

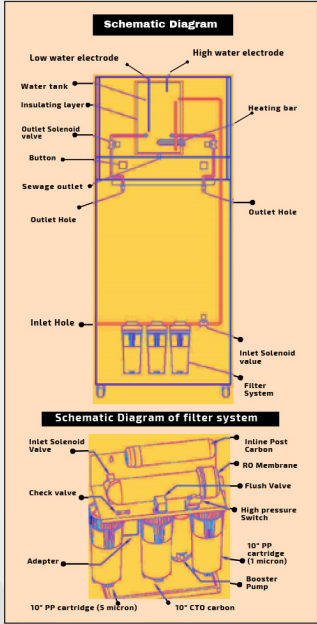
Material : Stainless Steel Structure

Capacity : 50 LPH

#### Ro water Purifier flow chart



## 2. Dispenser UF+UV with hot water (Soft water).



### FEATURES :

- Outer body chrome plated glossy finish SS cabinet.
- 15 Liters Hot water stainless steel storage tank.
- Crystal processor 10ND (magnetizer patented).
- Ready room temperature for drinking.
- Ready hot water for tea/coffee.
- Touch screen digital display.
- Boiling water up to 100 °C.
- Bacteria Free Water.
- 10" Pre-filter set.
- Fully automatic.
- UF + UV

### SPECIFICATION :

Product Dimensions :

L x W x H : 400 x 465 x 1500 mm

Material : Stainless Steel Structure

Capacity : 50 LPH

### UF + UV Filter flow chart

